

1. Change Mode 1 (right hand throttle) to Mode 2 (left hand throttle) for the Optic6 transmitter:



2. Take off the TX module:



3. Take off the antenna.



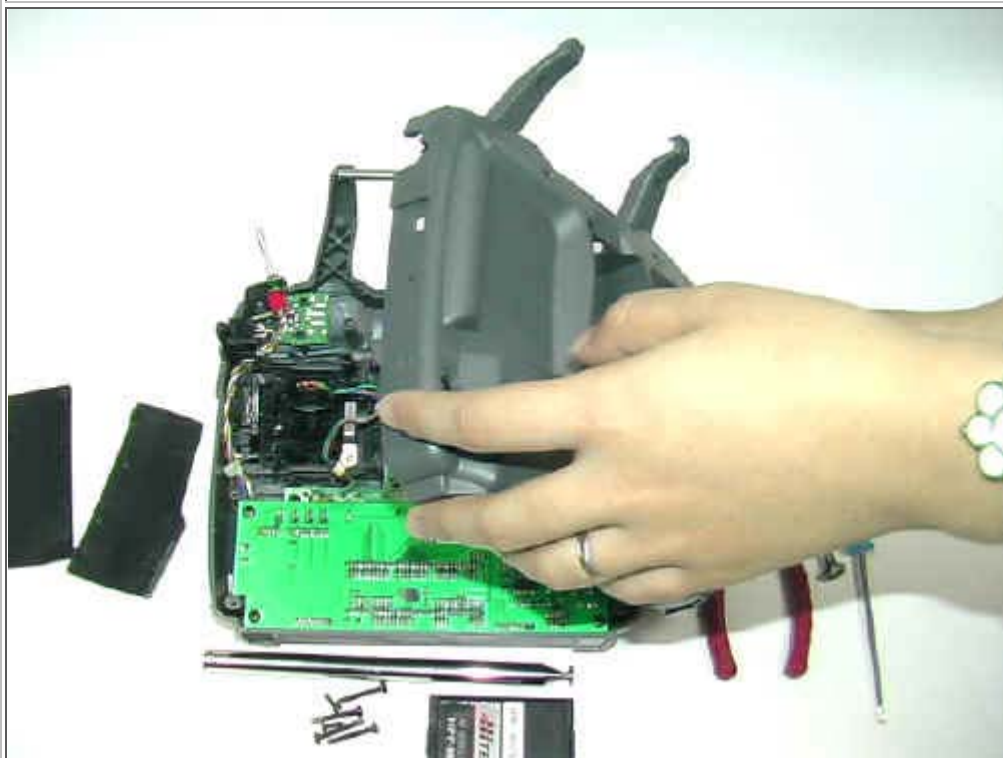
4. Open the back cover of the transmitter by 6 screws:



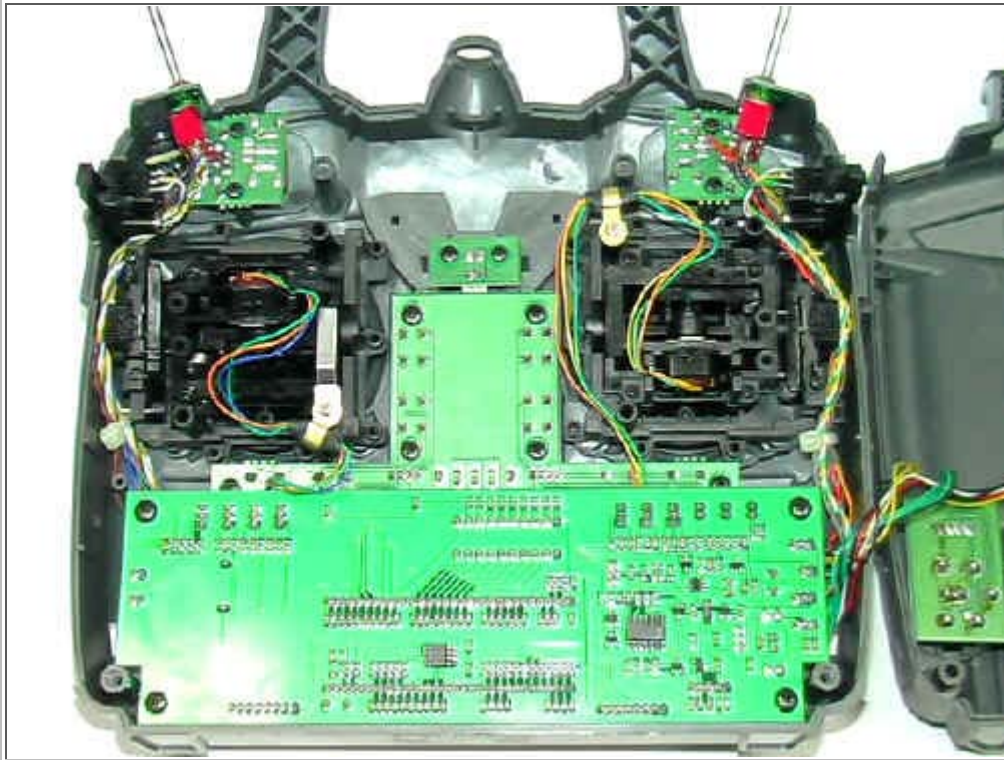
5. Take off left covers and right:



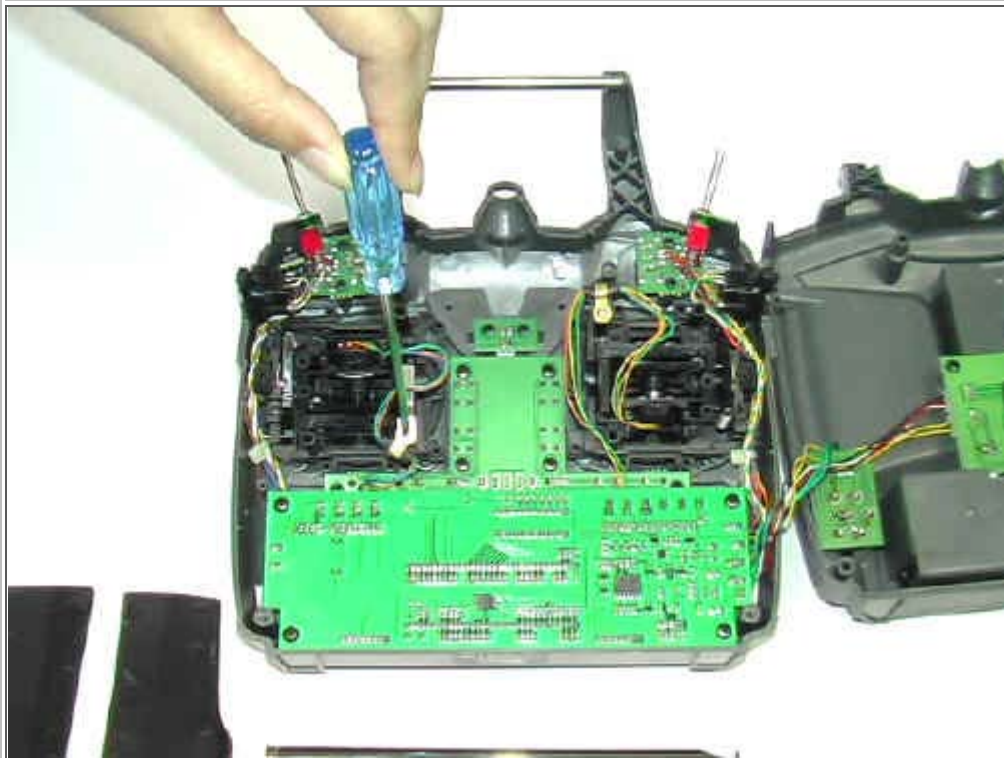
6. Open the back cover:



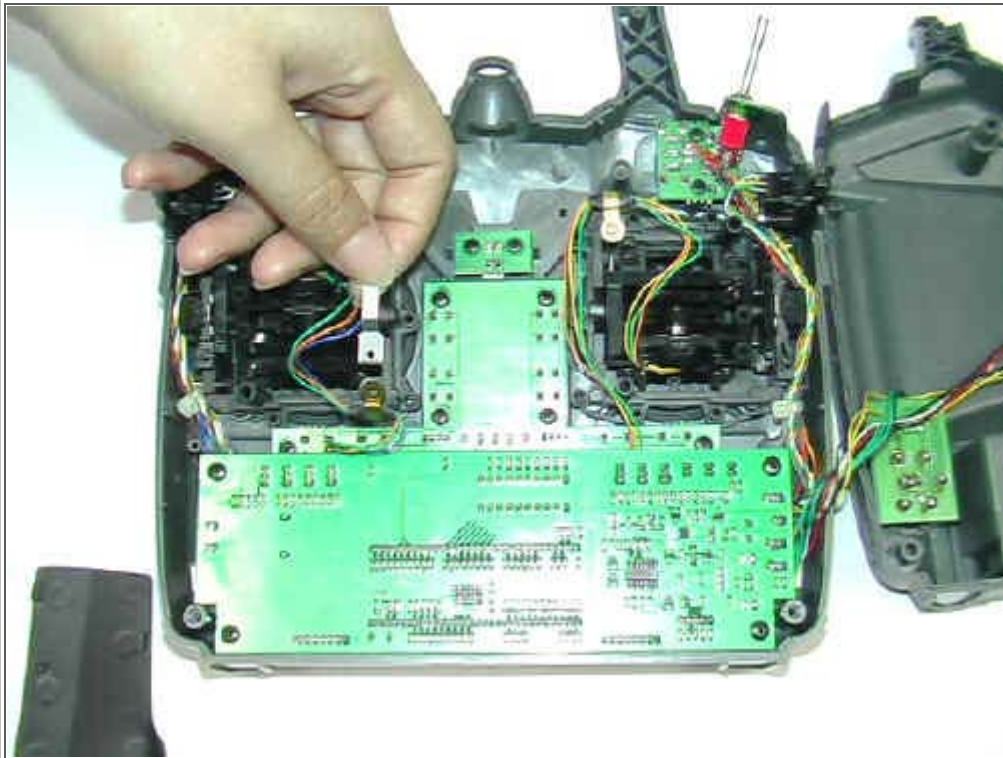
7. Inside configuration:



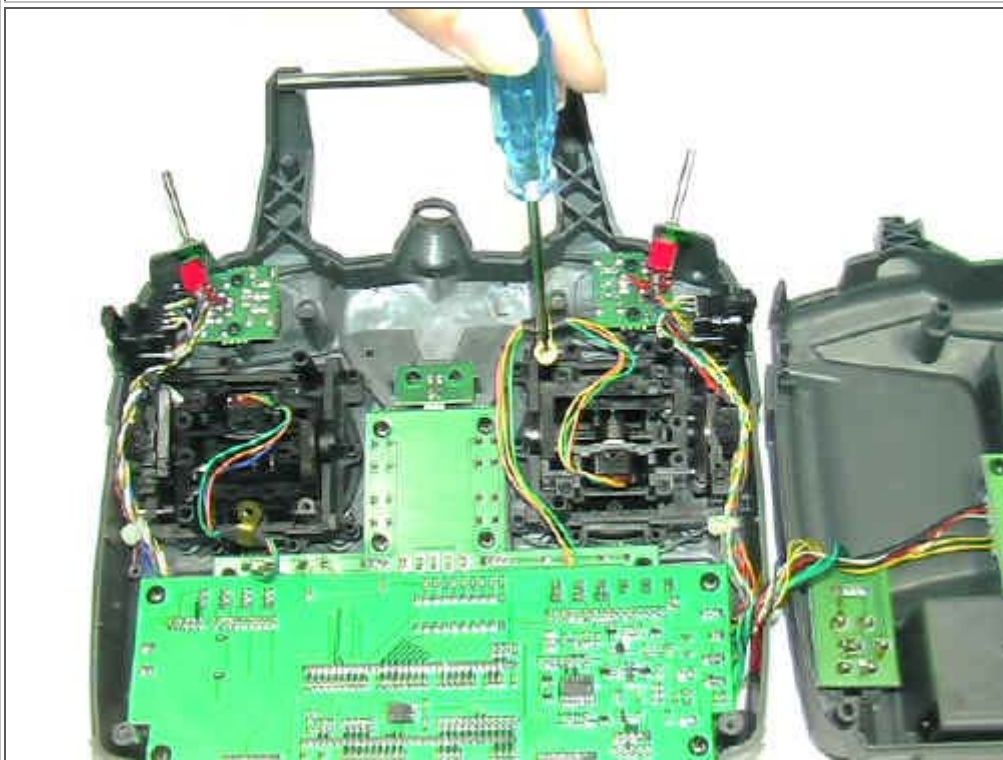
8. Take off the screw:



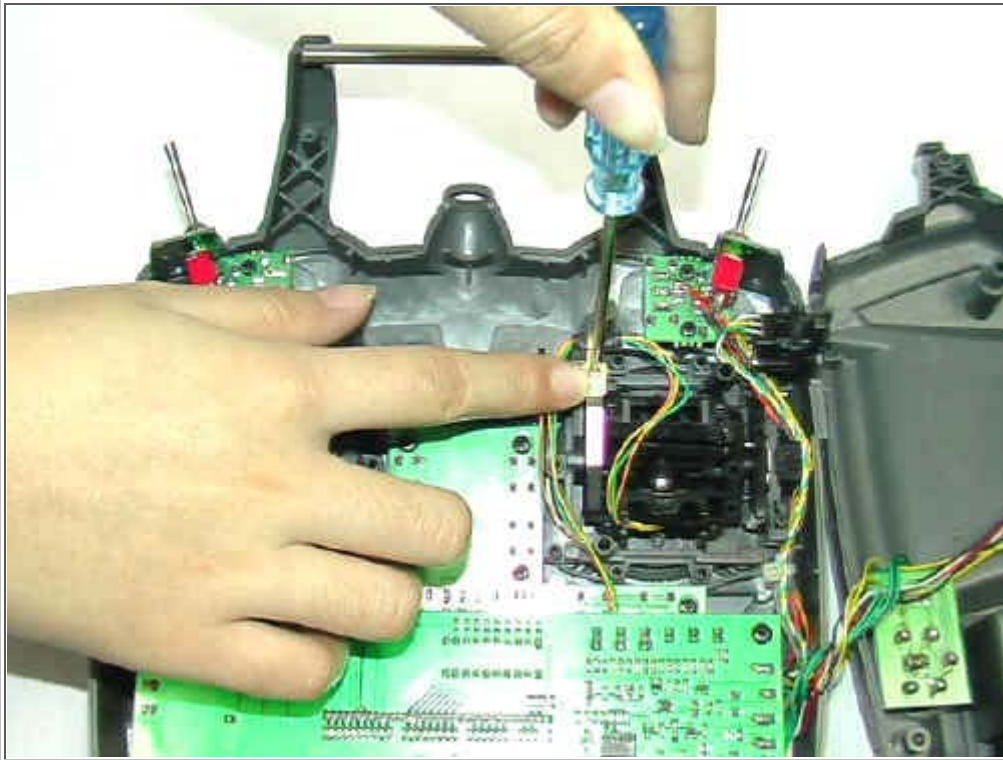
9. Take off the spring reed:



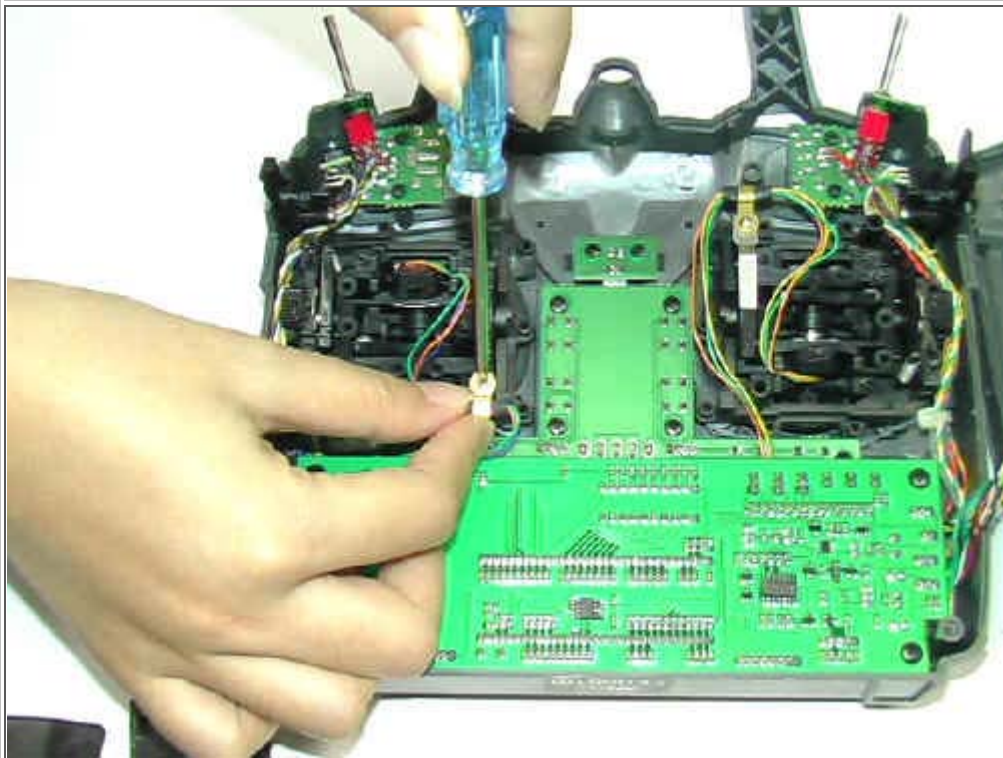
10. Take off the screw:



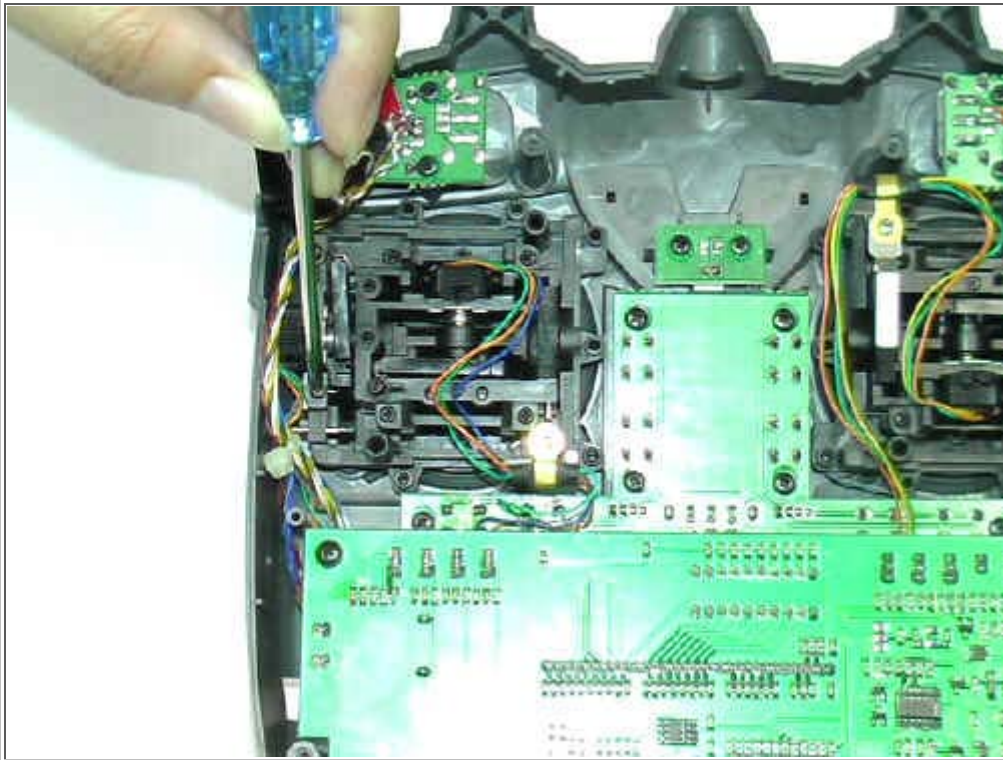
11. Install the spring reed to another side:



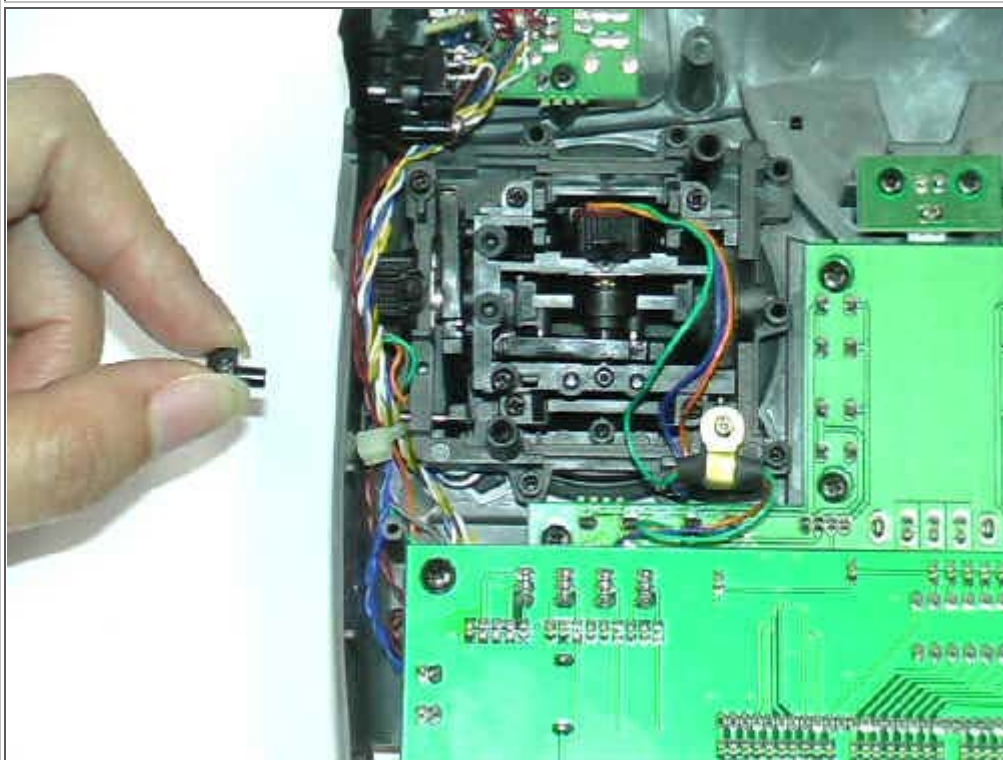
12. Fix the screw here:



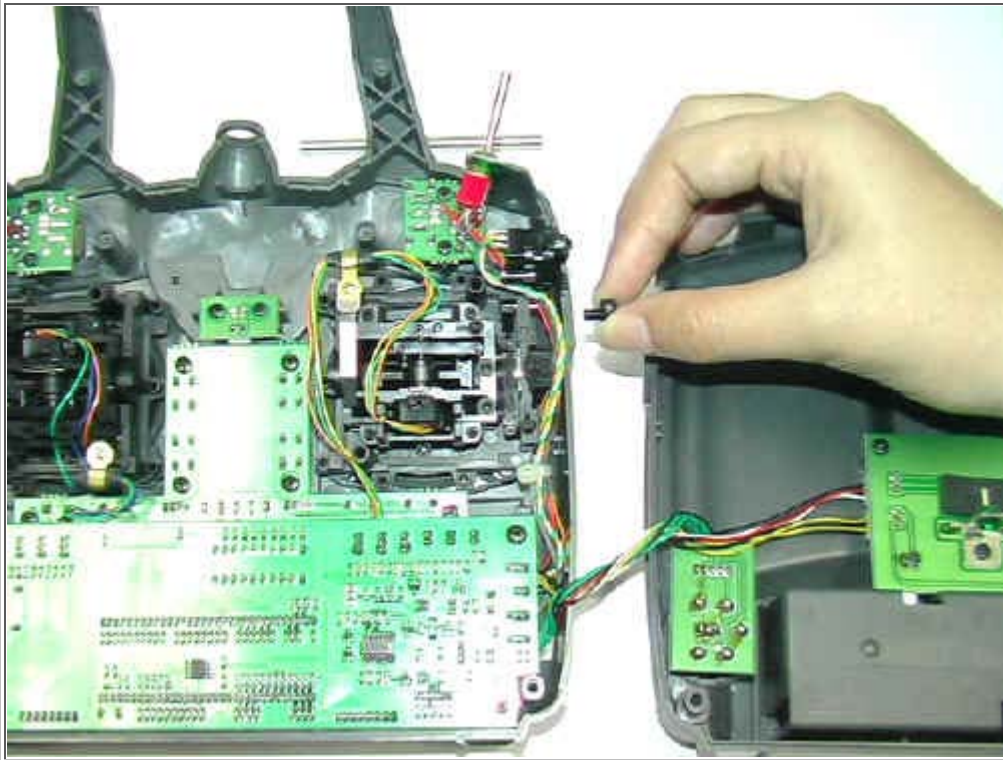
13. Take off the screw:



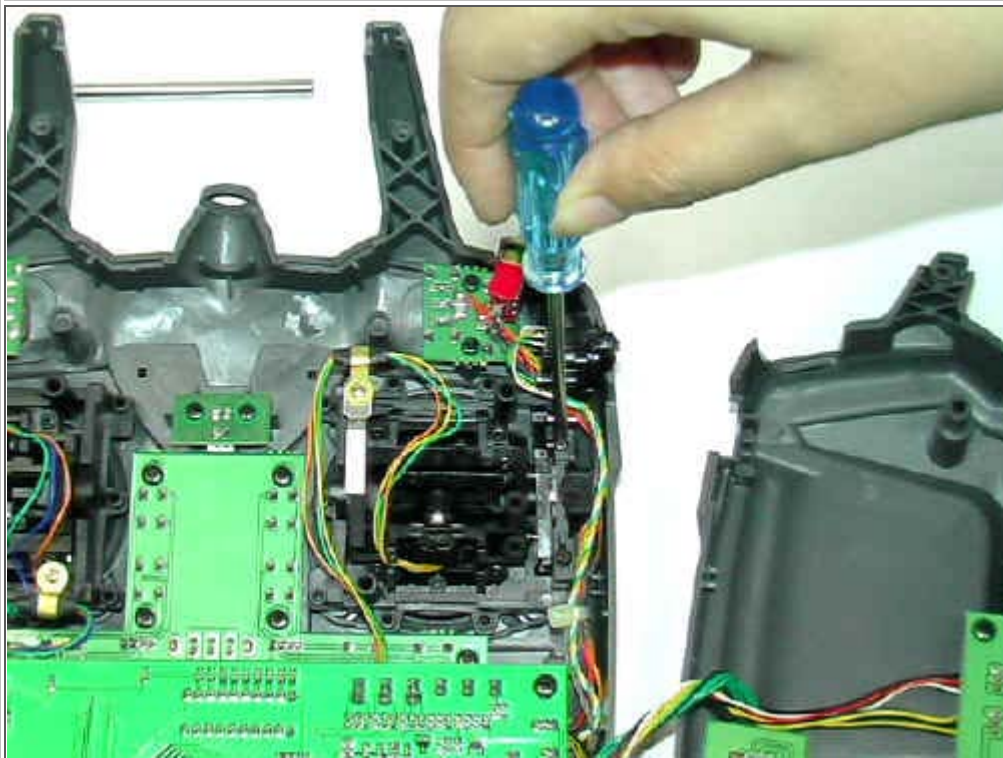
14. Take off the plastic part:



15. Install the plastic part to another side same place:

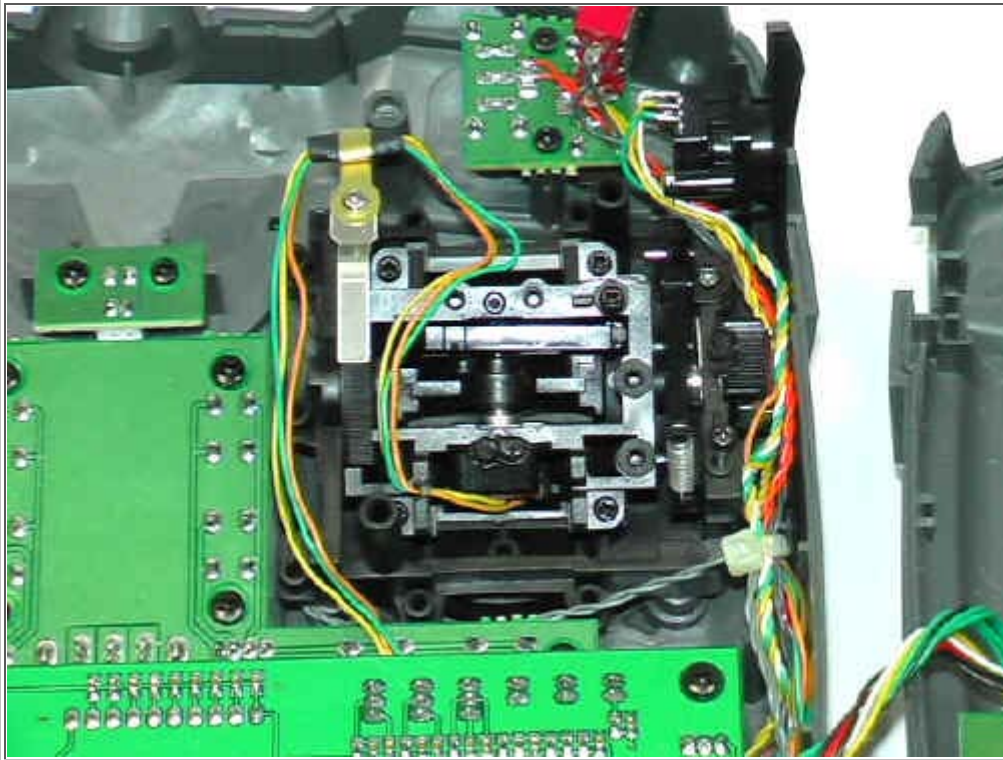


16. Fix the plastic part by the screw:



17. Finish the job:





18. Close the back cover:



19. Install 6 screws:



20. Take off the plastic part 2 from other side:



21. That is the plastic part 2:



22. look at 3 parts took off:



23. But no finish the Mode 2,needs setup internal program by the screen of the transmitter:



24. First press down 2 keys 'EDIT' same time, then switch on the power of the transmitter:



25. Press down the 'EDIT' right key:



26. Press down the 'CURSOR' right key, change the MODE 1 to MODE 2:



27. Switch off the transmitter:



THE END